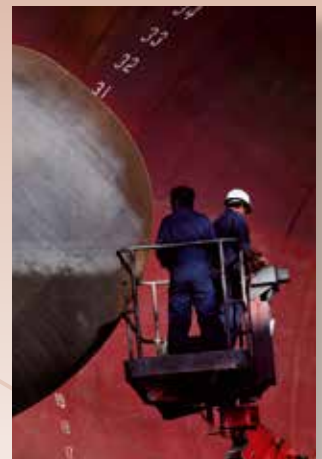
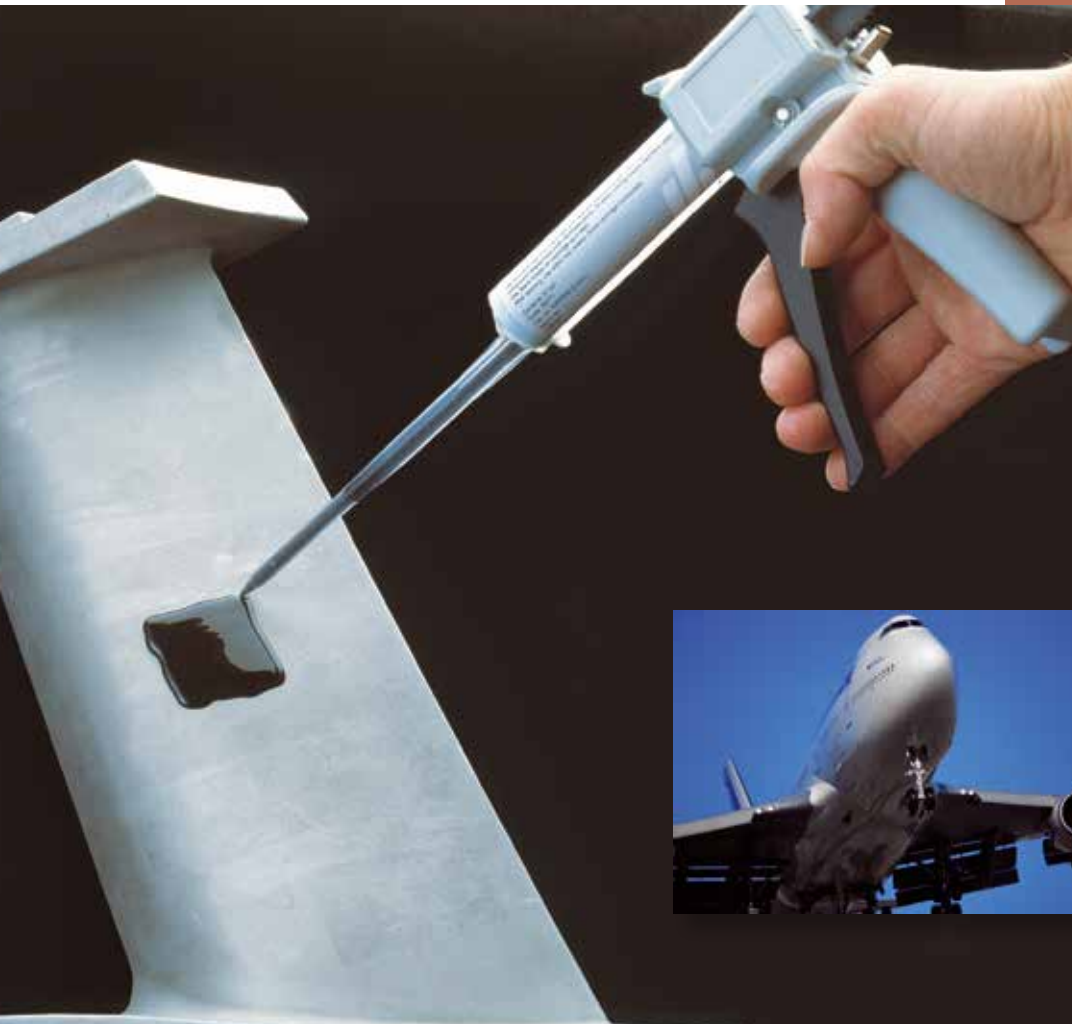


RepliSet



**An advanced
replica technique
for the inspection of
critical surfaces**



The most versatile replicating system

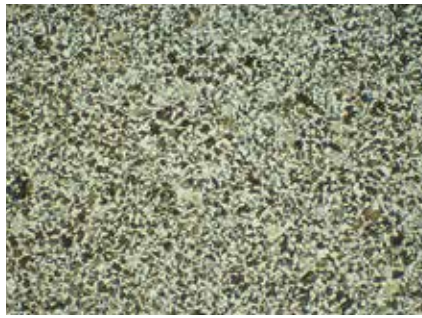
**For non-destructive testing and field applications
For engineering inspection and forensic investigation**

Replicate in the field – examine in the laboratory

- High resolution: down to 0.1 micron
- Virtually no shrinkage: dimensionally accurate for measurement purposes
- Optimized for either optical microscopy or comparator macroscopy
- Other inspection techniques include SEM, laser metrology and interferometry
- Extensive operator experience is not necessary
- Replicas of any size and shape can be produced
- Flexible high strength replicas can be taken from inaccessible surfaces and can be removed from moderately re-entrant geometry
- Short curing time
- Can replicate surfaces over a wide range of temperature

Medium C-steel. Sample etched with Nital 3%. Magnification x100

Sample



Replica

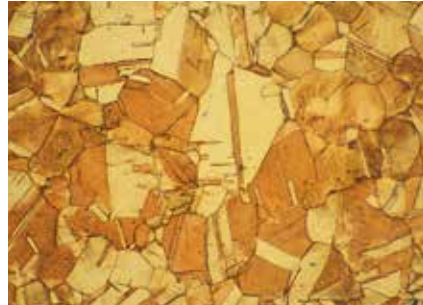


RepliSet is a complete system for replicating materials. It is designed to transfer the structure of a solid surface to a flexible, highly accurate and stable replica. The result is an exact 3D copy of the surface, allowing microscopic examination and precise measurements. RepliSet is an accepted replicating system for ASTM standard E 1351 "Standard Practice for Production and Evaluation of Field Metallographic Replicas".

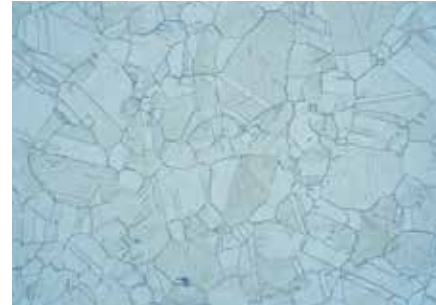
RepliSet is a specially formulated, fast curing, two-part silicone rubber. The compounds are supplied in cartridges and are applied using dispensing guns. The cartridges contain both polymer and curing agent, which are automatically mixed in a disposable static-mixing nozzle during application to the surface. Various, reusable nozzle tips are available for spreading the compound on a flat surface or for conducting the compound into holes and cavities.

RepliFix is a less advanced parallel to RepliSet. RepliFix and RepliSet are designed to bond together. The two components are mixed and applied by hand. RepliFix is used as support for RepliSet or as a stand alone product for

Pure copper. Sample etched with cupric chloride and ammonia. Magnification x100



Sample



Replica

moulding of surface shape for low tech applications.

A backing slide bonds to the RepliSet or RepliFix replica. The backing slide serves to maintain the original profile and ensures a flat back to the replica.

A specially-designed backing paper, which bonds to the replica, is optional but it facilitates the handling, labelling and protection of the replica. The backing paper also allows thin replicas of curved surfaces to be taped flat on glass slides for microscopic examination.

Replicating has never been so easy

With the easy-to-operate dispensing gun, everybody can produce perfect replicas first time. Extensive operator experience is unnecessary and you can be sure to return to the lab with good replicas.

In routine inspection situations, replicas produced by a person present in the field can be evaluated at specialist laboratories. With the best possible success rate, RepliSet saves you time and consumables.

Any type and any shape

Most common solid materials such as metals, ceramics, plastics and glass can be replicated. It works even on rough re-entrant surfaces.

There are no size or thickness limitations. The compound can be dispensed



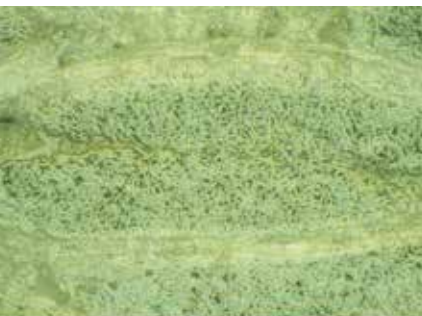
An operator dispenses RepliSet onto a sample



An operator peels off the cured replica



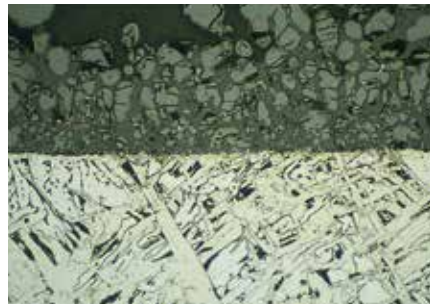
Sample



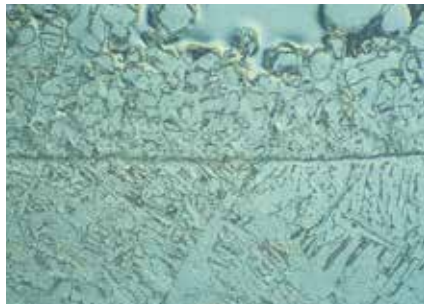
Replica



Kevlar fibre. RepliSet shows better image than original due to fibres' translucent behaviour. Magnification x 200



Sample using Bright Field



Replica using DIC

Overheated steel with corrosion layer. Etched with Nital 3%. Magnification x100



on any surface shape allowing inspection at remote locations where access is difficult, such as inside pipes or machinery. As the RepliSet replicas have a high tear strength and flexibility they can easily be removed from moderately re-entrant geometry without damage or distortion. Upon release, the material returns to its original shape.

A positive replica of a 3D surface can be produced by replicating the original replica with the compound itself or with an epoxy resin.

Under all conditions

The compound is available in versions with a range of viscosities and curing times tailored for application under different working conditions and on horizontal as well as vertical or overhead surfaces.

Generally, the weather is no problem. Being water-repellent, RepliSet can provide replicas under humid conditions. It will

cure on surfaces in a temperature range from -10°C to +180°C allowing rapid inspection and minimizing possible machinery downtime.

High resolution and form stability

RepliSet offers a very high resolution down to 0.1 micron.

RepliSet has no shrinkage, and is therefore suitable for high accuracy metrology measurements.

Replicas can be transported without any problems and can be stored indefinitely for future reference.

RepliSet is safe

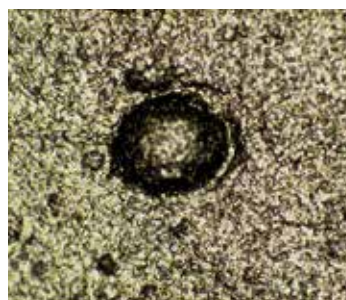
RepliSet compounds are solvent free and cleared for all normal modes of transportation, including air.

During work the operator is not exposed to any unhealthy fumes.

The compounds are approved for use on stainless steel in nuclear plants.

Laser measurement of pitting

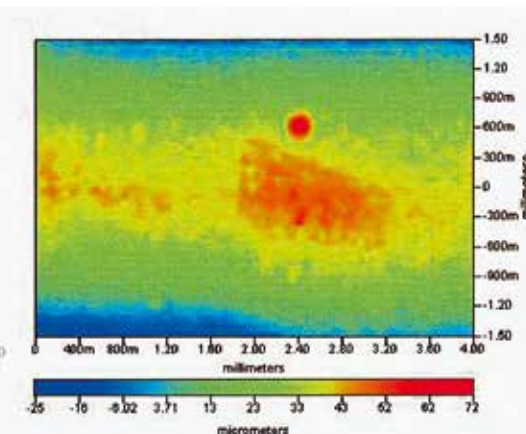
Replica of pitting

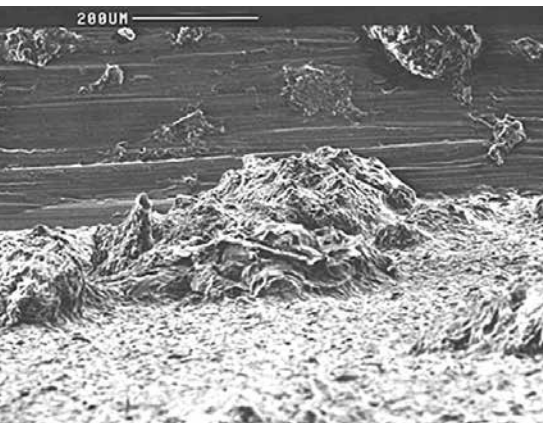


Depth of pitting

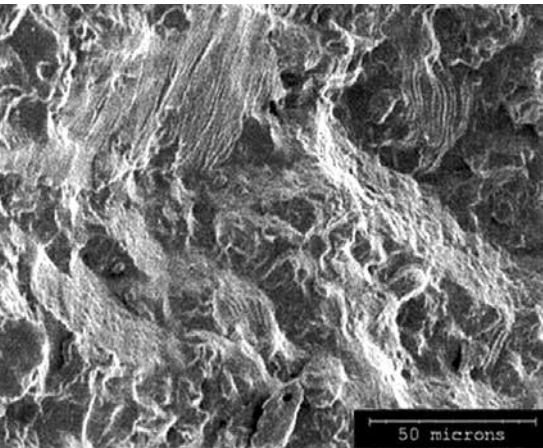


Width of pitting

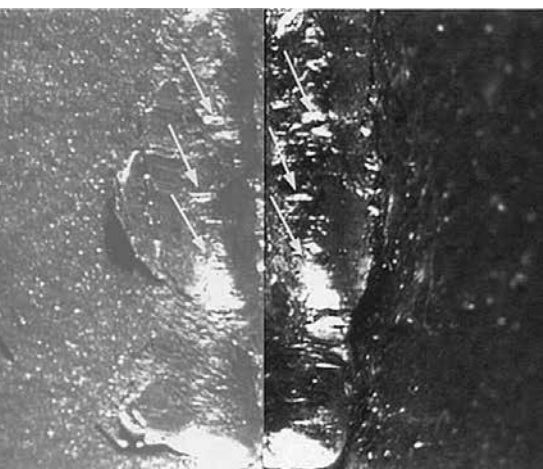




Replica of pitting. Examined by SEM



SEM micrograph of RepliSet replica of fatigue crack



The marks from previous use of the tool are identical



The materials are designed specifically to be compatible with stainless steels and other engineering alloys and not to compromise future corrosion behavior after replication.

A variety of examination methods

The black coloured RepliSet-F and -T types are optimized for optical microscopy using reflected light. The replicas will reflect light like a metal. This makes them very well-suited for microstructural examination at magnifications up to x500 using Bright Field, Dark Field or DIC. White light interferometry can be used for precise surface measurements including determination of surface finish. Replicas can often give better results than the original surface, because of the uniformity of their reflection.

The grey coloured RepliSet-GF and -GT types have been formulated for macroscopy. The replica will give a high image contrast, when the surface is examined in a stereomicroscope with oblique illumination. This is particularly advantageous for monitoring of surface degradation, fracture surfaces, damage or wear. The products also have great potential for many metrology applications and for forensic examination of tool marks by comparator macroscopy. The grey types are not suitable for optical microscopy using reflected light.

All replicas are suitable for 3D examination at high magnifications by SEM either directly, using low values of column voltage, or after metallic coating.

3D examination can be carried out using non-contact metrology methods such as interferometry, laser scanning and shadowgraph projection.

Macrophoto of RepliSet-GF1 replica of cracking and pitting in heat effected zone in stainless steel



Engineering inspection applications

Typical applications are on-site non-destructive testing in connection with quality control, inspection, maintenance, reconditioning and failure analysis, typically within high tech engineering industries including power generation (fossil fuel or nuclear), aerospace, offshore industry, etc.

The use of high-resolution RepliSet replicas allows otherwise inaccessible surfaces and irregularities in critical machinery in service to be examined and measured under laboratory conditions.

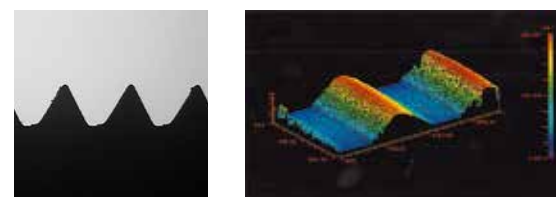
Typical tasks are:

- detection and monitoring of pitting, corrosion, cracking, creep, deformation and wear
- assessment of change in micro-structure
- inspection of internal surfaces such as bolt hole threads and root welds in small bore tubes
- quality control of edges, heights, angles, surface finish, thread profiles and other dimensions

Forensic investigation

In the course of forensic investigations comparator macroscopy / microscopy is used to identify whether fine scratch details found in tool-marks can be related to features on the original tool.

RepliSet-G is employed for replicating tool marks in the field. Comparison marks produced on lead using a suspect



tool are similarly replicated and the replicas may be compared by comparator microscopy.

Case for RepliSet

The RepliSet Case is designed for transportation and use of the 50 ml RepliSet system. It is made of aluminium and is at the same time elegant and sturdy. It can be carried as hand luggage by air and is compact and sturdy to such an extent, that it can be taken to locations with narrow or difficult access.

The contents is either fixed by straps in the lid or placed in compartments in the two detachable foam rubber inserts. Each item has its fixed position. The user has access to all that is needed to perform a regular replication by just opening the lid of the RepliSet Case. The lower insert carries a small stock of consumables.

RepliSet is an accepted replicating system for ASTM standard E 1351 "Standard Practice for Production and Evaluation of Field Metallographic Replicas".

The 50 ml system



The 265 ml system



TECHNICAL DATA	RepliSet	RepliFix
Viscosity of uncured compound	Very low (F-types) Low (T-types)	High
Detail reproduction	Down to 0.1 µm	Down to 5 µm
Shrinkage	Negligible	Negligible
Tear strength	15-20 kN/m ²	Low
Hardness	30 Shore A	76 Shore A
Temperature range for the surface to be examined	-10°C to + 180°C (14°F to + 356°F)	0°C to + 150°C (32°F to + 302°F)
Life span of the finished replica	Practically indefinite	Practically indefinite

Struers ApS
 Pederstrupvej 84
 DK-2750 Ballerup, Denmark
 Phone +45 44 600 800
 Fax +45 44 600 801
 struers@struers.dk
 www.struers.com

SPECIFICATIONS	Cat. No.	Cat. No.
----------------	----------	----------

<p>RepliSet Replication system for non-destructive testing of a microstructure or a 3D structure. Fast curing two-part silicon rubber compound for flexible high-resolution 3D replicas. For the 50 ml system, the hand-operated dispensing gun (40900066) and the static mixing nozzles (40900088) are used in combination with the 50 ml cartridges. For the 265 ml system, the hand-operated dispensing gun (40900065) and the static-mixing nozzles (40900056) are used in combination with the 265 ml cartridges.</p>		
<p>RepliSet-F1 Particularly useful for replicating horizontal or sloping surfaces in low temperature conditions or where rapid results are required. Fluid rapid curing compound with working life of 0.5-1 min. and curing time of 4 min. at 25°C (77°F).</p>		
<p>1 cartridge of 50 ml</p>	40900069	
<p>5 cartridges of 50 ml</p>	40900047	
<p>2 cartridges of 265 ml</p>	40900051	
<p>RepliSet-F5 General-purpose material. Particularly useful for replicating horizontal or sloping surfaces in normal or high temperature conditions. Fluid fast curing compound with working life of 5 min. and curing time of 18 min. at 25°C (77°F).</p>		
<p>1 cartridge of 50 ml</p>	40900068	
<p>5 cartridges of 50 ml</p>	40900046	
<p>2 cartridges of 265 ml</p>	40900050	
<p>RepliSet-T1 Particularly useful for replicating vertical or overhead surfaces in low temperature conditions or where rapid results are required. Thixotropic rapid curing compound with working life of 0.5 - 1 min. and curing time of 4 min. at 25°C (77°F).</p>		
<p>1 cartridge of 50 ml</p>	40900071	
<p>5 cartridges of 50 ml</p>	40900049	
<p>2 cartridges of 265 ml</p>	40900053	
<p>RepliSet-T3 General-purpose material. Particularly useful for replicating vertical or overhead surfaces in normal or high temperature conditions. Thixotropic fast curing compound with working life of 3 min. and curing time of 10 min. at 25°C (77°F).</p>		
<p>1 cartridge of 50 ml</p>	40900070	
<p>5 cartridges of 50 ml</p>	40900048	
<p>2 cartridges of 265 ml</p>	40900052	
<p>RepliSet-GF1 Replication system especially for comparator macroscopy and metrology. Particularly useful for replicating horizontal or sloping surfaces and filling holes. Fluid rapid curing compound with working life of 0.5-1 min. and curing time of 4 min. at 25°C (77°F).</p>		
<p>1 cartridge of 50 ml</p>	40900078	
<p>5 cartridges of 50 ml</p>	40900076	
<p>RepliSet-GT1 Replication system especially for comparator macroscopy and metrology. Particularly useful for replicating vertical or overhead surfaces. Thixotropic rapid curing compound with working life of 0.5-1 min. and curing time of 4 min. at 25°C (77°F).</p>		
<p>1 cartridge of 50 ml</p>	40900079	
<p>5 cartridges of 50 ml</p>	40900077	
<p>RepliFix Specially formulated hand mixed fast curing two-part silicone rubber. Bonds to RepliSet. Particularly useful in combination with RepliSet for producing a rigid backing. It can be used directly for moulding of surface shape for profile measurement.</p>		
<p>RepliFix-2 For low temperature conditions or where rapid results are required. Working life of 2-3 min. and curing time of 10 min. at 25°C (77°F).</p>		40900084
<p>RepliFix-20 For high temperature conditions or for taking replicas of complicated geometry or large areas. Working life of 20 min. and curing time of 60 min. at 25°C (77°F).</p>		40900086
<p>ACCESSORIES</p>		
<p>Dispensing Gun Hand-operated dispensing gun. For 50 ml cartridges</p>		40900066
<p>For 265 ml cartridges</p>		40900065
<p>Static-mixing Nozzles For RepliSet replication compound in 50 ml cartridges, 35 pcs.</p>		40900088
<p>265 ml cartridges, 10 pcs.</p>		40900056
<p>Nozzle Tips For replicating flat surfaces. Fishtail spreader, 10 mm width. To be mounted on 50 ml static-mixing nozzle (40900088).</p>		40900089
<p>For replicating small holes. Luer needle, 1 mm dia., 30 mm long. To be mounted on 50 ml static-mixing nozzle (40900088).</p>		40900060
<p>For replicating larger holes. Flexible hose, 6 mm dia., 100 mm long. To be mounted on 50 ml static-mixing nozzle (40900088).</p>		40900061
<p>Backing Slides A flexible plastic slide, which bonds to the replica and ensures a flat back to the replica. For levelling of replicas to assist microscopic examination, as dimensional support for metrology and for well-ordered labelling, transport and storage of RepliSet replicas.</p>		40900087
<p>26 x 76 x 1 mm. 50 pcs.</p>		
<p>Backing Paper Bonds to the replica and facilitates labelling, handling and the levelling of replicas to assist microscopic examination.</p>		40900062
<p>60 x 70 mm. 100 pcs.</p>		
<p>A4 (210 x 297 mm). 10 pcs.</p>		40900063
<p>Case for RepliSet 50 ml System Aluminium carrying case with room for all necessities for field applications. The content is ordered separately.</p>		40900067
<p>L x d x h = 445 x 155 x 330 mm</p>		

AUSTRALIAN & NEW ZEALAND

Struers Australia
 27 Mayneview Street
 Milton QLD 4064
 Australia
 Phone +61 7 3512 9600
 Fax +61 7 3369 8200
 info.au@struers.dk

BELGIUM (Wallonie)

Struers S.A.S.
 370, rue du Marché Rollay
 F- 94507 Champigny
 sur Marne Cedex
 Téléphone +33 1 5509 1430
 Télécopie +33 1 5509 1449
 struers@struers.fr

BELGIUM (Flanders)

Struers GmbH Nederland
 Zomerdijk 34 A
 3143 CT Maassluis
 Telefoon +31 (10) 599 7209
 Fax +31 (10) 5997201
 netherlands@struers.de

CANADA

Struers Ltd.
 7275 West Credit Avenue
 Mississauga, Ontario L5N 5M9
 Phone +1 905-814-8855
 Fax +1 905-814-1440
 info@struers.com

CHINA

Struers Ltd.
 No. 1696 Zhang Heng Road
 Zhang Jiang Hi-Tech Park
 Shanghai 201203, P.R. China
 Phone +86 (21) 6035 3900
 Fax +86 (21) 6035 3999
 struers@struers.cn

CZECH REPUBLIC & SLOVAKIA

Struers GmbH Organizační složka
 v deckotechnický park
 Pilejská 1920,
 CZ-252 63 Roztoky u Prahy
 Phone +420 233 312 625
 Fax +420 233 312 640
 czechrepublic@struers.de
 slovakia@struers.de

GERMANY

Struers GmbH
 Carl-Friedrich-Benz-Straße 5
 D- 47877 Willich
 Telefon +49 (0) 2154 486-0
 Fax +49 (0) 2154 486-222
 verkauf@struers.de

FRANCE

Struers S.A.S.
 370, rue du Marché Rollay
 F-94507 Champigny
 sur Marne Cedex
 Téléphone +33 1 5509 1430
 Télécopie +33 1 5509 1449
 struers@struers.fr

HUNGARY

Struers GmbH
 Magyarországi Fióktelep
 Tatai ut 53
 2821 Gyermely
 Phone +36 (34) 880546
 Fax +36 (34) 880547
 hungary@struers.de

IRELAND

Struers Ltd.
 Unit 11 Evolution@ AMP
 Whittle Way, Catcliffe
 Rotherham S60 5BL
 Tel. +44 0845 604 6664
 Fax +44 0845 604 6651
 info@struers.co.uk

ITALY

Struers Italia
 Via Monte Grappa 80/4
 20020 Arese (MI)
 Tel. +39-02/38236281
 Fax +39-02/38236274
 struers.it@struers.it

JAPAN

Marumoto Struers K.K.
 Takanawa Muse Bldg. 1F
 3-14-13 Higashi-Gotanda,
 Shinagawa
 Tokyo
 141-0022 Japan
 Phone +81 3 5488 6207
 Fax +81 3 5488 6237
 struers@struers.co.jp

NETHERLANDS

Struers GmbH Nederland
 Zomerdijk 34 A
 3143 CT Maassluis
 Telefoon +31 (10) 599 7209
 Fax +31 (10) 5997201
 netherlands@struers.de

NORWAY

Struers ApS, Norge
 Sjøskogveien 44C
 1407 Vinterbro
 Telefon +47 970 94 285
 info@struers.no

AUSTRIA

Struers GmbH
 Zweigniederlassung Österreich
 Betriebsgebiet Puch Nord 8
 5412 Puch
 Telefon +43 6245 70567
 Fax +43 6245 70567-78
 austria@struers.de

POLAND

Struers Sp. z o.o.
 Oddział w Polsce
 ul. Jasnogórska 44
 31-358 Kraków
 Phone +48 12 661 20 60
 Fax +48 12 626 01 46
 poland@struers.de

ROMANIA

Struers GmbH, Sucursala Bucuresti
 Str. Preciziei nr. 6R
 062203 sector 6, Bucuresti
 Phone +40 (31) 101 9548
 Fax +40 (31) 101 9549
 romania@struers.de

SWITZERLAND

Struers GmbH
 Zweigniederlassung Schweiz
 Weissenbrunnenstraße 41
 CH-8903 Birmsdorf
 Telefon +41 44 777 63 07
 Fax +41 44 777 63 09
 switzerland@struers.de

SINGAPORE

Struers Singapore
 627A Aljunied Road,
 #07-08 BizTech Centre
 Singapore 389842
 Phone +65 6299 2268
 Fax +65 6299 2661
 struers.sg@struers.dk

SPAIN

Struers España
 Camino Cerro de los Gamos 1
 Building 1 - Pozuelo de Alarcón
 CP 28224 Madrid
 Teléfono +34 917 901 204
 Fax +34 917 901 112
 struers.es@struers.es

FINLAND

Struers ApS, Suomi
 Hietalahdenranta 13
 00180 Helsinki
 Puhelin +358 (0)207 919 430
 Faksi +358 (0)207 919 431
 finland@struers.fi

SWEDEN

Struers Sverige
 Box 20038
 161 02 Bromma
 Telefon +46 (0)8 447 53 90
 Telefax +46 (0)8 447 53 99
 info@struers.se

UNITED KINGDOM

Struers Ltd.
 Unit 11 Evolution @ AMP
 Whittle Way, Catcliffe
 Rotherham S60 5BL
 Tel. +44 0845 604 6664
 Fax +44 0845 604 6651
 info@struers.co.uk

USA

Struers Inc.
 24766 Detroit Road
 Westlake, OH 44145-1598
 Phone +1 440 871 0071
 Fax +1 440 871 8188
 info@struers.com

Struers' products are subject to constant product development.
 Therefore, we reserve the right to introduce changes in our products without notice.